

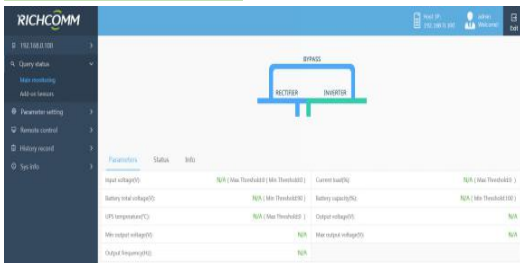
Feature:

- IP based LAN, WAN, Internet, ADSL, E1, Wireless Ethernet etc;
- Support network protocol like SNMP V1, V2c, V3, HTTP, HTTPS, DNS, SMTP, DHCP, SNIP, SSH, SSL;
- Support IPV4/IPV6;
- Compatible with multi-brand, multi-model of UPS;
- Available to add on temperature, humidity detect;
- Available to add on USB device.

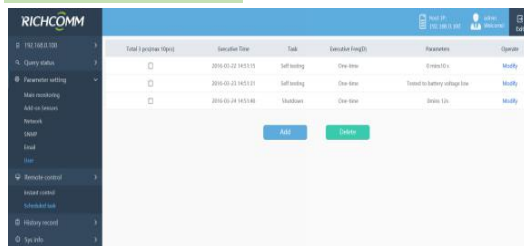


User Interface:

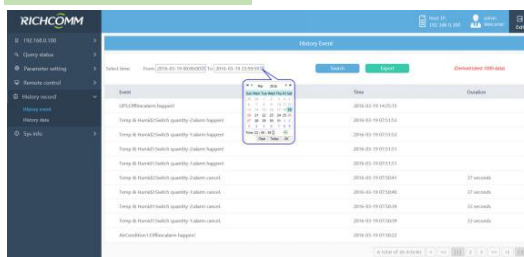
Summary



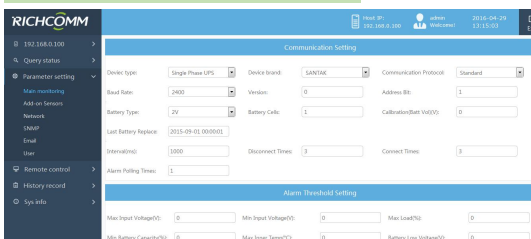
Task Schedule



History Records



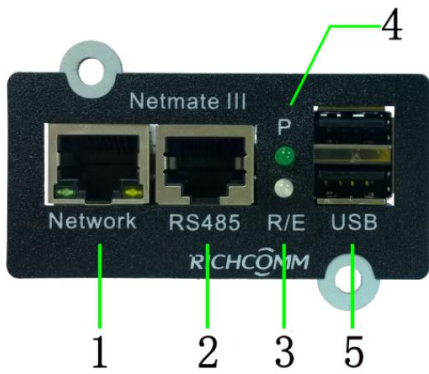
Communication Settings



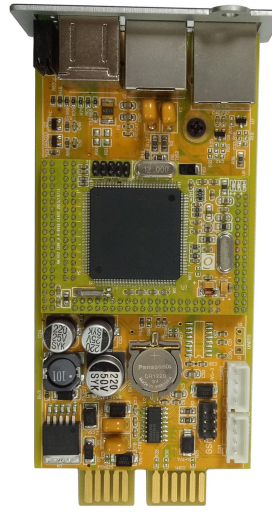
Functions:

- Support advantage encryption protocol such as HTTP, HTTPS, SSL, SSH, SNMPV1\V2c\V3;
- Support telnet, super terminal, WEB page configuration;
- Compatible with multi-brand and multi-type of UPS;
- Support to add on 2 pieces of Temp&Humid sensors via RS422/RS485 ports;
- Support SNMP trap, E-mail alarm notification;
- Support IPV4/IPV6
- Support scheduled task, remotely control UPS self-testing, switch on/off, battery regularly charge/discharge);
- Support 50000 history events and 5000 data record;
- Comprehensive event handle(including event record and notification);
- Comprehensive managing function(data logs, Sntp and task schedule);
- Support IPV4/IPV6;
- Available to work with centralized software.

◆ Ports Introduction(Internal):



NetmateIII SE



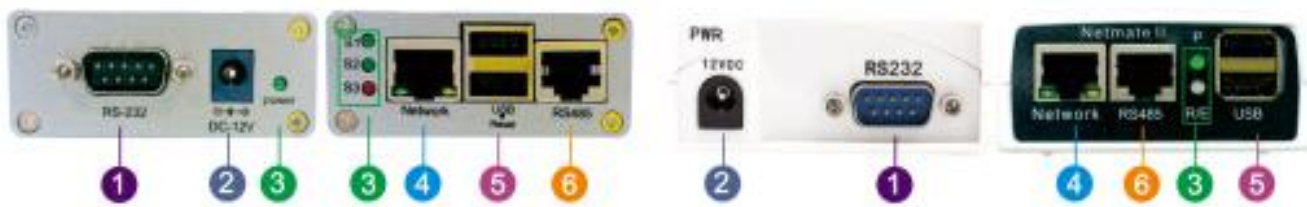
NetmateIII MINI



6

1. Network:10/100M RJ45 Ethernet port, connect to network;
2. RS485: RS485 port for extension;
3. R/E: Device Offline, green indicator frequently flash, about 2.5Hz; Normal, green indicator normally flash, 0.25Hz, 2s light, 2s dark;
4. P: power indicator, constantly on;
5. USB: USB0,USB1, to USB device;
6. Gold Finger.

◆ Ports Introduction(External):



- | | | |
|------------|------------------|----------|
| 1 RS 232 | 3 LED indicators | 5 USB |
| 2 DC input | 4 Ethernet port | 6 RS 485 |

◆ Network Diagram:



◆ Accessories:

	Name	M.N	Function	Connection
1	Temp&Humid Sensor	RC77015 OLED Display	Detect data center indoor temperature and humidity parameters, every 20 M ² need to install 1pc	RS422
		RC77012 Digital Type		

◆ Technical Specification:

CPU	32-bit ARM926EJS core 300 MHz high speed processor(CPU)		
RAM	64Mbyte SDRAM	Flash ROM	128M byte and Flash
Ethernet	10/100Mbps high speed Ethernet self adaptive		
USB	2 USB 2.0(connect USB add on device)		
Serial Port	1 Gold finger for UPS connection		
	1 RS485 serial port for adding on Temp&Humid sensors		
SNMP MIB	Support RFC1213, RFC1628, PPC MIB		
Network Protocols	TCP/IP, UDP, SNMP, Telnet, SNTP, HTTP, SMTP, DHCP, DNS, TFTP, ARP, ICMP, PPP, DNS, TFTP, ARP, ICMP, PPP		
Encrypted Protocols	HTTPS, SSH, SSL, IPV6, SNMP V3		
LED Indicators	Power, Status, Ready, LAN 10/100M Link/Active		
Input(DC)	8- 15V	Running Environment	Temp: 0°C~ 70°C Humid: 10 ~ 80%
Power Consumption	≤2.5W	Software Upgrade	Network Upgrade
Other Configurations	System clock for synchronization		
Languages	Chinese, English and OEM other language		
System Safety	Provided based on IP filtering mechanism, and system operation, control and management of the user ID and password protection		
Certificates	CE/FCC		